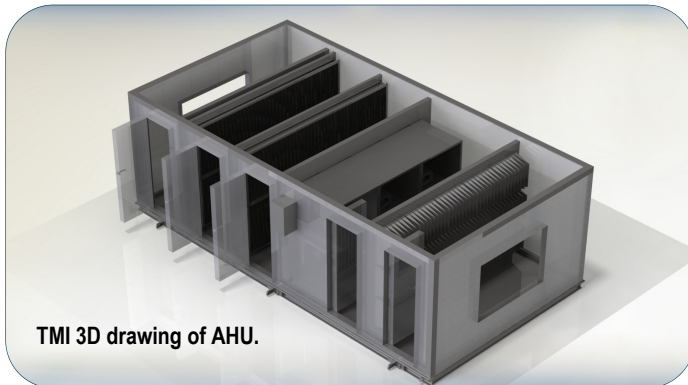


Custom Air Handling Units

For over 30 years, with a commitment to quality and customer satisfaction, TMI Climate Solutions continually strives to not only meet, but exceed our customer's expectation with every air handling unit manufactured. Every unit is unique to the customer's need, and is designed and engineered to meet their space constraints.



TMI 3D drawing of AHU.

Main Features and Benefits

- TMI offers custom solutions to unique design requirements
- Unit designed to meet specialized requirements of existing footprint
- Engineering capability to design around columns and various structural limitations to match existing unit dimensions
- Architecturally pleasing siding options to meet aesthetic requirements



Volume and Static Pressure

- 1,000-400,000 CFM units customized to meet our customer's needs.
- Highest quality rooftop and interior custom units
- Uniquely designed for large scale or challenging design requirements
- Standard units are designed to withstand up to 12" of static pressure
- Custom housing units have the capability to meet up to 65" of static pressure



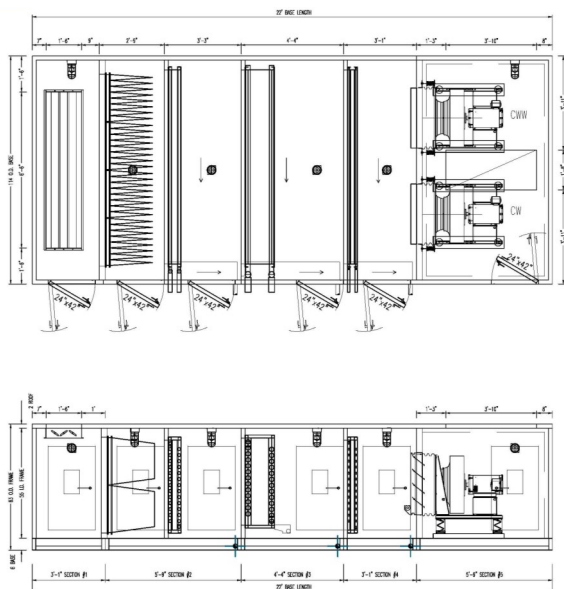
Air Handling Unit Components

- Heating components consist of gas fired, hydronic, and steam
- Cooling components consist of chilled water coils and DX condensing coils
- Humidification options consist of steam humidification, spray humidification, media, and evaporative humidification
- Dehumidification components consist of various desiccant wheels options
- Energy Recovery options consist of plate to plate, energy wheels, and Heat Pipe refrigerant



Housing Features and Options

- Panels are constructed from a variety of material options: galvanized, aluminum, stainless steel, and aluminized
- TMI's standard construction housing with 3+1 No Thru Metal Construction
- EZY Fit™ foam injected panels for knock down capability
- Urethane foam insulation is sprayed to a density of 2.5lbs/ft and is standard to the construction process
- Panel thickness are offered in 2" standard or 3" and 4" thermal break panel
- Antimicrobial coatings for interior liners are available to meet the requirements of specialty markets such as healthcare, pharmaceutical, and institutional



TMI uses top designing tools such as Autocad, Quickpen, Inventor, Solidworks, Revit Compatible Models and TMI exclusive program Sempro for your engineering needs.



TMI Climate Solutions

Headquarters: 200 Quality Way • Holly, MI 48442 • Southwest Regional Office: 12033 Highway 6 Ste. 500 • Fresno, TX 77545
P: 888-727-8772 • F: 810-694-5804 • tmiclimatesolutions.com