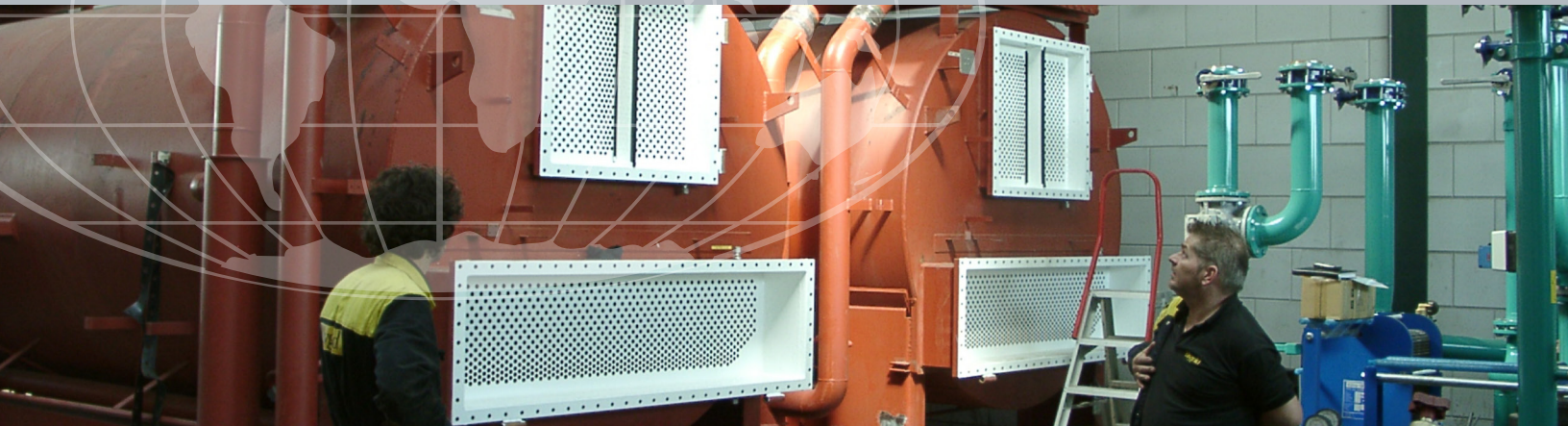


# Tube Sheet & Water Box Coating



## PROBLEM

Tube sheets and water boxes are subject to severe corrosion due to the construction with dissimilar metals and corrosive water. The pitting corrosion around the tubes will rapidly create leakages while corrosion of baffle plates and water boxes results in early replacements and severe capacity loss.

Simply applying a coating will not prevent this due to the complexity of the construction. A special procedure must be followed to ensure the coating system will protect the valuable equipment for many years.

## WHY BLYGOLD TUBE SHEET COATING?

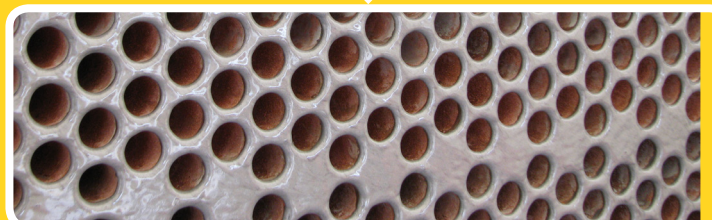
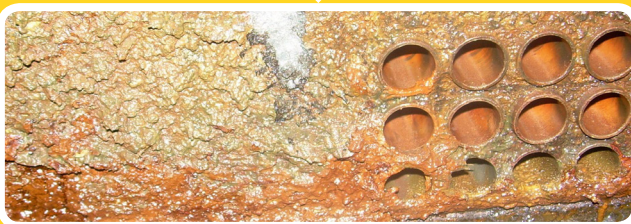
- Corrosion causes leakages and capacity loss
- Corrosion results in early replacement or re-tubing

## SOLUTION

Blygold protects tube sheets and water boxes from leakages and prevents early replacements. The dissimilar metals of the tube and sheet are sealed from the corrosive environment by means of a smooth and resistant coating.

The special pretreatment ensures perfect adhesion, smooth surfaces, prevents pressure drop and guarantees an extra protection at critical areas.

The dust free blasting and VOC coating makes the treatment suitable for both factory and site application. Reconstruction of severely corroded baffle plates prevents capacity loss.



# Tube Sheet & Water Box Coating

## APPLICATION INFORMATION

- 1 Draining water, dismounting boxes.
- 2 Insert corks to prevent blasting damage and coating in tubes.
- 3 Surface preparation: dust free blasting. Creating surface roughness for optimal adhesion of protective coating.
- 4 Verification blasting result. Mechanical removal of blasting debris and pollution.
- 5 Coating application . Ceramic reinforced epoxy coating with aluminum pigmentation for optimal underwater corrosion protection. Applied in 2 layers to enable visual quality and layer thickness control.
- 6 Dry layer thickness verification and pinhole detection.
- 7 Removal of cork debris.
- 8 Remounting water boxes. Seal renewal, bold lubrication, controlled bold tightening.
- 8 Exterior insulation replacements.

## TECHNICAL INFORMATION

Treatment:	Blygold Tube Sheet Coating
Coating type:	Two-pack, surface tolerant, high solid ceramic reinforced epoxy mastic coating
Color:	Grey/black
Pretreatment:	Tube end facing Sand blasting
Layer Thickness:	2 x > 250 µm
Water Resistance	Excellent
Abrasion Resistance	Excellent
Solvent Resistance	Good
Chemical Resistance:	Good
Flexibility:	Good

## CONTACT

Blygold International B.V.  
 PO Box 44, 3990 DA Houten The Netherlands  
 Phone: +31 30 6344344 – Fax: +31 30 6344300  
 E-mail: [info@blygold.com](mailto:info@blygold.com) – [www.blygold.com](http://www.blygold.com)



## CONTACT